

**ABUTMENT 1**

NOTE: Fill of Abut. 1 to be built up to bottom of Abutment according to specifications before driving piles. Care shall be taken in making fill so that large boulders will not interfere with the driving of the piles.

**PIER 1**

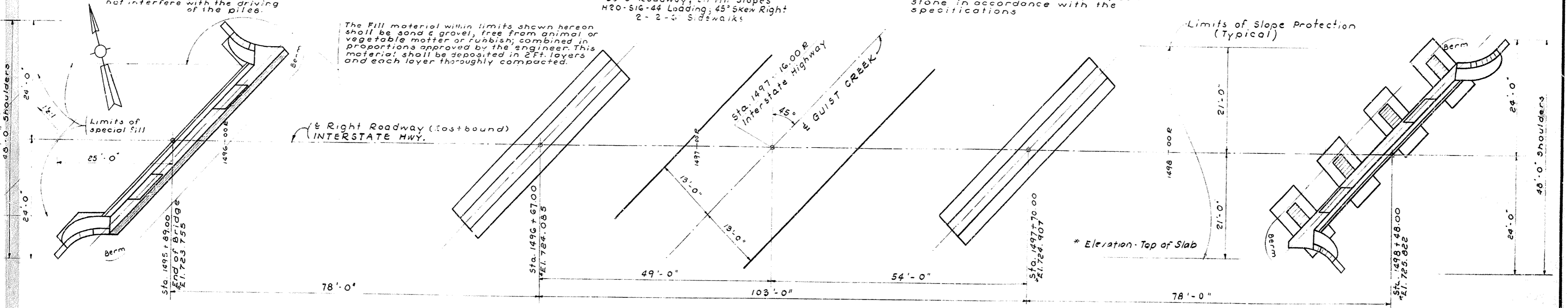
NOTE: Build & Backfill Pier 1 before making fill at Abut. 1

**ELEVATION**

74'-2 1/2" 103'-0", 74'-2 1/2" R.C.D.G.  
 30'-0" Roadway, 2:1 Fill Slopes  
 H20-SIG-44 Loading, 45° Skew Right  
 2'-2'-6" Sidewalks

Slope protection to be cyclopean stone in accordance with the specifications

Special Fill Material of Abut. 2. For Details see 3rd Dwg. SF-1



**PLAN GENERAL NOTES**

Specifications: Kentucky Department of Highways, 1956 Specifications with Amendments H20-SIG-44 as specified in A.A.S.H.O. 1957 Specifications or alternate loading of two axles four feet apart with each axle weighing 24,000 lbs., whichever gives the greater stress.

Concrete: Class 'A' Concrete to be used throughout.

Reinforcement: Dimensions from face of concrete to bars are clear distances unless otherwise shown. Dimensions for bar spacing are distances center to center of bars.

Baveled Edges: All exposed edges to be beveled 1/8" unless otherwise noted.

Bill of Incidental Material: Quantities given in the Bill of Incidental Material are approximate only, and the contractor is responsible for furnishing enough material to complete the work in accordance with the plans and specifications.

Design Stresses:  $f_c = 1200 \text{ psi}$ ,  $f_s = 18000 \text{ psi}$ ,  $n = 10$ . Foundation Pressure 20,000 psf Approach Pavement 24' Roadway Shoulders 48'

Piles: Piles are driven to rock or to sustain a load of 50 tons. Test Piles shall be accurately located so as to be used in the finished structure. For location of test piles see Sheet No. 13.

Expansion Jt. Material: (Copper Strip 9" for Paper: False Work: The cost of these items shall be included in the price bid for Class 'A' Concrete.

Construction Joints: To be commensal grade for paper or roofing felt approximately 1/16" thick. The falsework supporting beams and slabs of any span of a continuous unit shall not be removed until all beams and slabs in all spans of that unit have been poured for at least twenty-one (21) days. All construction joints shall be carefully formed. The contractor shall furnish sufficient mixer capacity on the job to place the concrete between the construction joints as noted on the plans in a period not exceeding ten hours continuous run. After one section of the concrete has been placed, the construction joints shall be cleaned of laitance, loose or foreign material just before the concrete takes its final set (which is about 6 hours). The joints shall then be covered with burlap and kept completely saturated with water. Flush the joint with 1:2 Portland Cement Mortar before placing the adjoining concrete section.

**BILL OF INCIDENTAL MATERIAL**

ITEM	No.	DESCRIPTION	LOCATION
Premoulded Exp. Jt. Filler	4	140' x 1/2" x 8'-0"	Abutments 1 & 2
"	2	1'-8 1/2" x 1" x 4'-3 1/2"	Abut. Between Cuckles
"	1	3'-8" x 1" x 42'-5"	Abut. Between Cuckles
Cooper Strip	1		

Standard Drawings: E.D.-17, E.D.-1, SF-1, H-110, G-351

GUIST CREEK CROSSING (EASTBOUND RDWY.) Sheet 1 of 15

**COMMONWEALTH OF KENTUCKY**  
**DEPARTMENT OF HIGHWAYS**  
**FRANKFORT**  
**COUNTY OF SHELBY**  
**LOUISVILLE - LEXINGTON**

ROAD: STATION 1497+16.00 INTERSTATE PROJECT NO. SP-100-006-1E

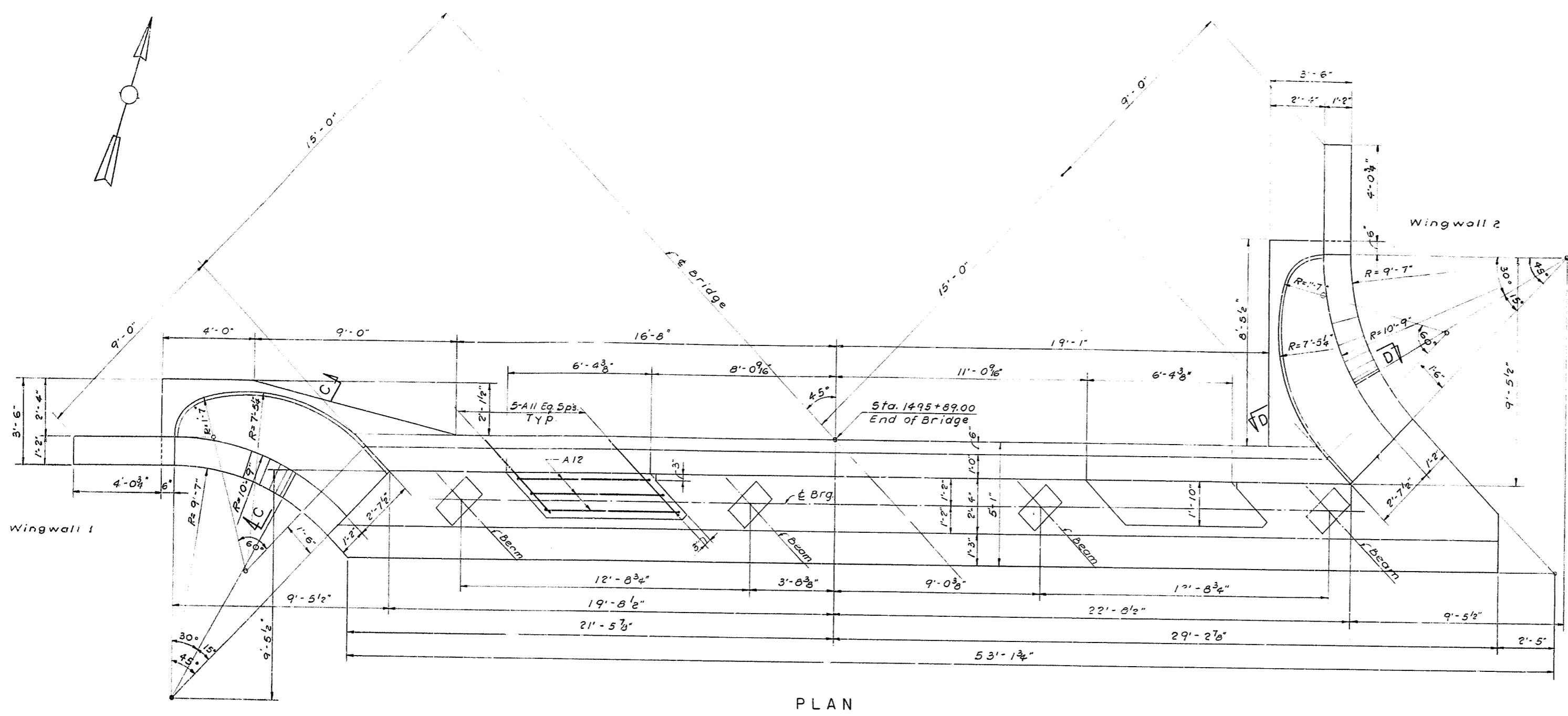
BRIDGE NUMBER: 106-806-6 I64 DRAWING NO. 3796

**REFERENCES AND ESTIMATE OF QUANTITIES**

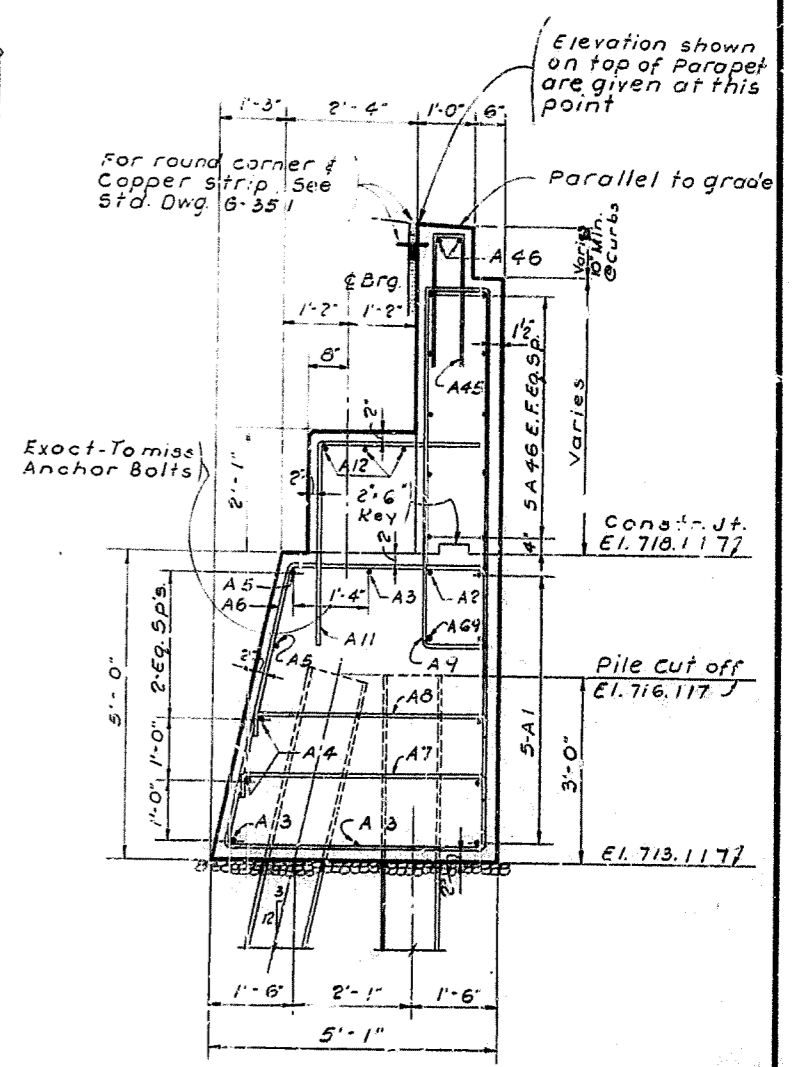
ITEM	SHEET No.	CONCRETE CLASS 'A' CU. YDS.	REINFORCEMENT LBS.	ALUMINUM HANDRAIL L.F.	STRUCT. STEEL APPROX. LBS.	STRUCT. EXCAVATION		12" STEEL PILES 53"		SLOPE PROTECT. SQ. YDS.	SPECIAL FILL TONS	6" CORR. METAL PIPE LIN. FT.	6" CORR. METAL PIPE LIN. FT.	
						COMMON CU. YDS.	SOLID ROCK CU. YDS.	FURNISHING LIN. FT.	DRIVING LIN. FT.					
Layout Sheet	1													
Abutment 1	2,3	87.8	5990									516	15	15
Pier 1	4	122.3	16060			271.8	33.2			206				
Pier 2	4	118.6	11130			315.0	41.1			154				
Abutment 2	5,6	133.9	13450			168.2	116.2			814	15	35		
Spans 1-2-3	7,8,9,10,11	633.1	180820	5095										
Contr. Elevations	17													
Exp. Devices & Shoes	551, ED1													18530
Handrail	H-110													
Soundings	15													
Pile Record	13													
Anchor Bolt Plan	14													
Totals		1095.9	227450	5095	18530	755.0	190.5	553	553	360	1330	30	50	

DESIGNED BY: M. K. CHECKED BY: T. A. B. DATE: 1/15/58  
 DRAWN BY: J. S. DATE: 1/15/58  
 REVISION: 1. INCORPORATE MATERIAL E-3 DATE: 1/15/58

FED. ROAD DIST.	STATE	PRO. NO.	SHEET NO.	TOTAL SHEETS
7	KY.	1-04-36		



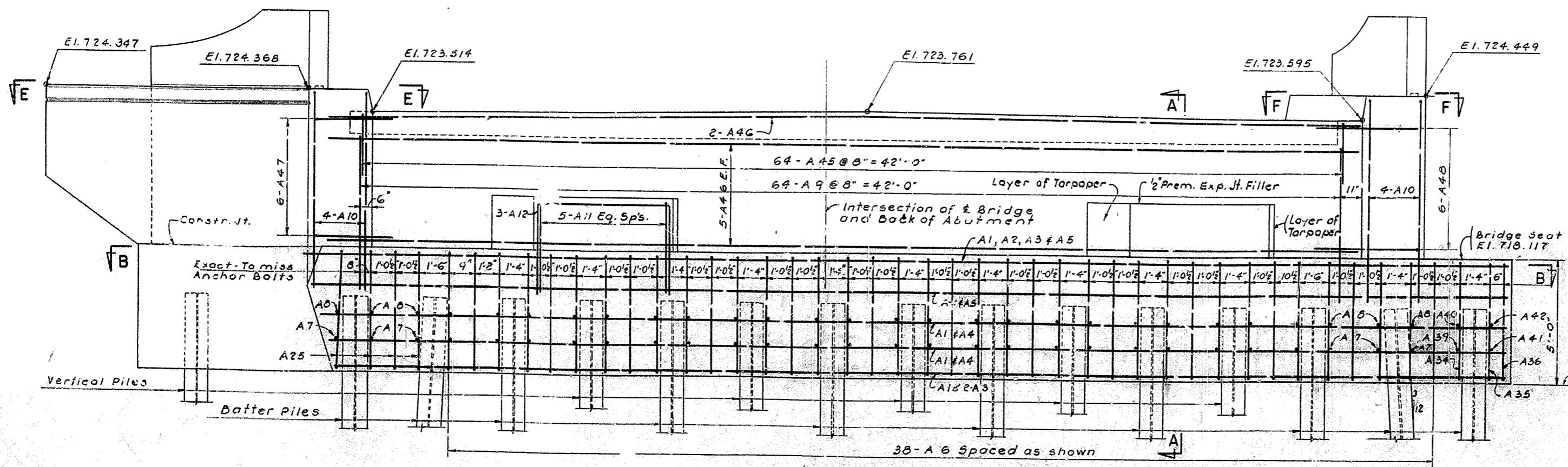
PLAN



SECTION A-A

NOTE: Dress subgrade to 2' below plan elevation for bottom of concrete cap. Add a 2" layer of #6 crushed stone or gravel and tamp this layer into the subgrade. Place 1/2" concrete mortar up to the bottom of cap elevation. Side forms for cap may be set as soon as mortar has set a sufficient time to support men or forms without being disturbed. These layers of stone and mortar are to be used along bottom of cap instead of forms and are considered as incidental material in lieu of bottom forms. This method of construction is used as otherwise, if bottom forms were used, the subgrade would be disturbed and improperly back filled after completion of the concrete cap. The cost of this item to be included in the unit price bid for Class 'A' concrete.

NOTE: For Sections B-B; C-C; D-D; E-E and F-F see Sheet No. 3



ELEVATION

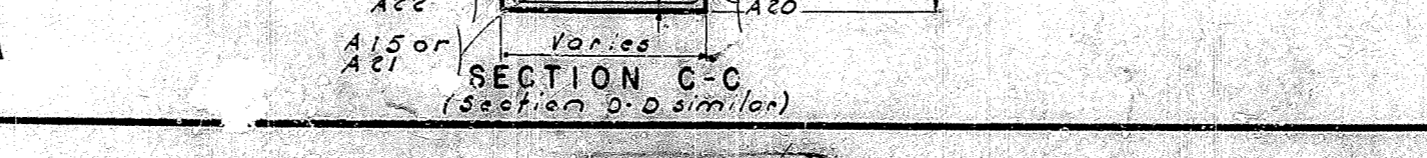
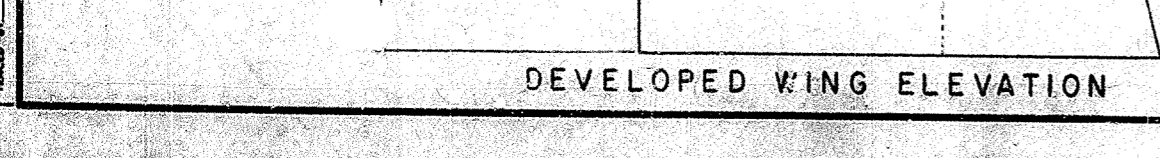
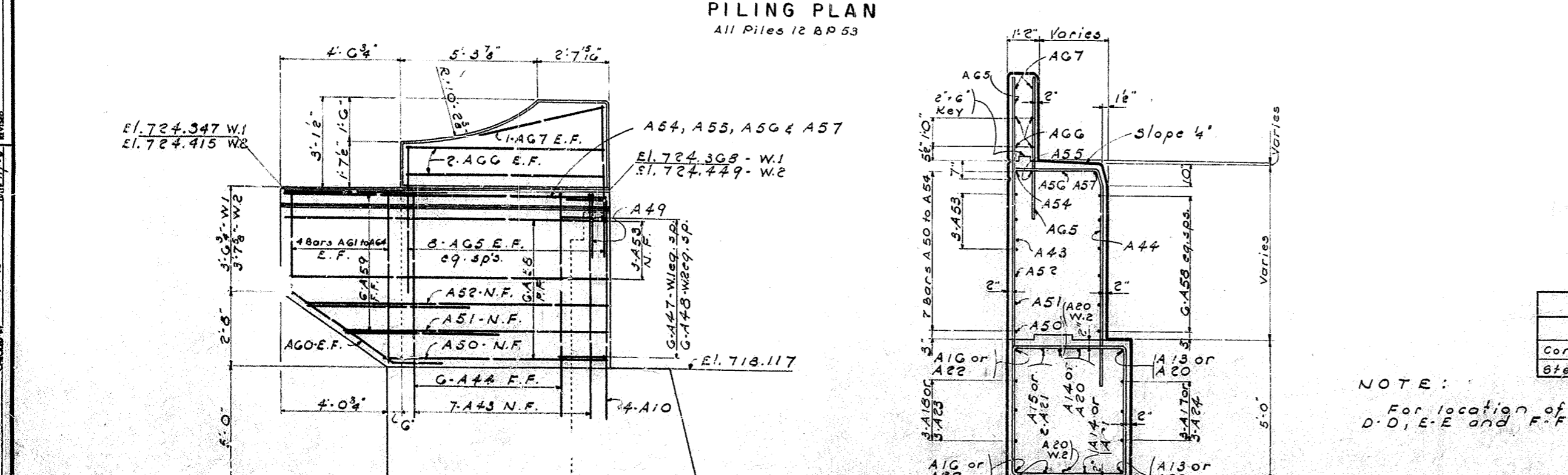
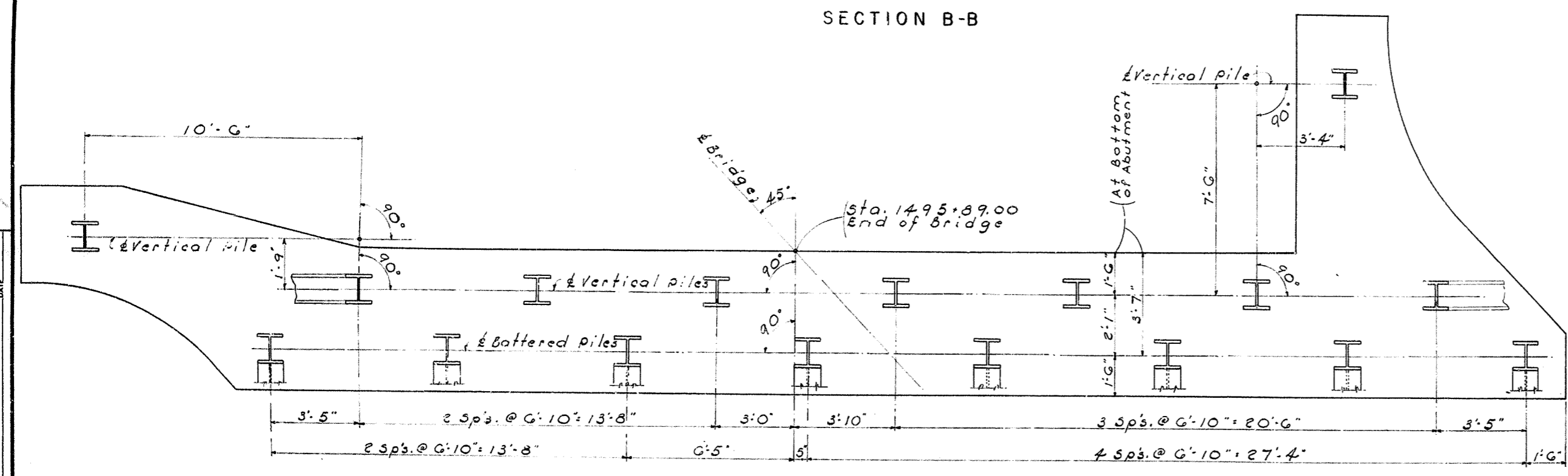
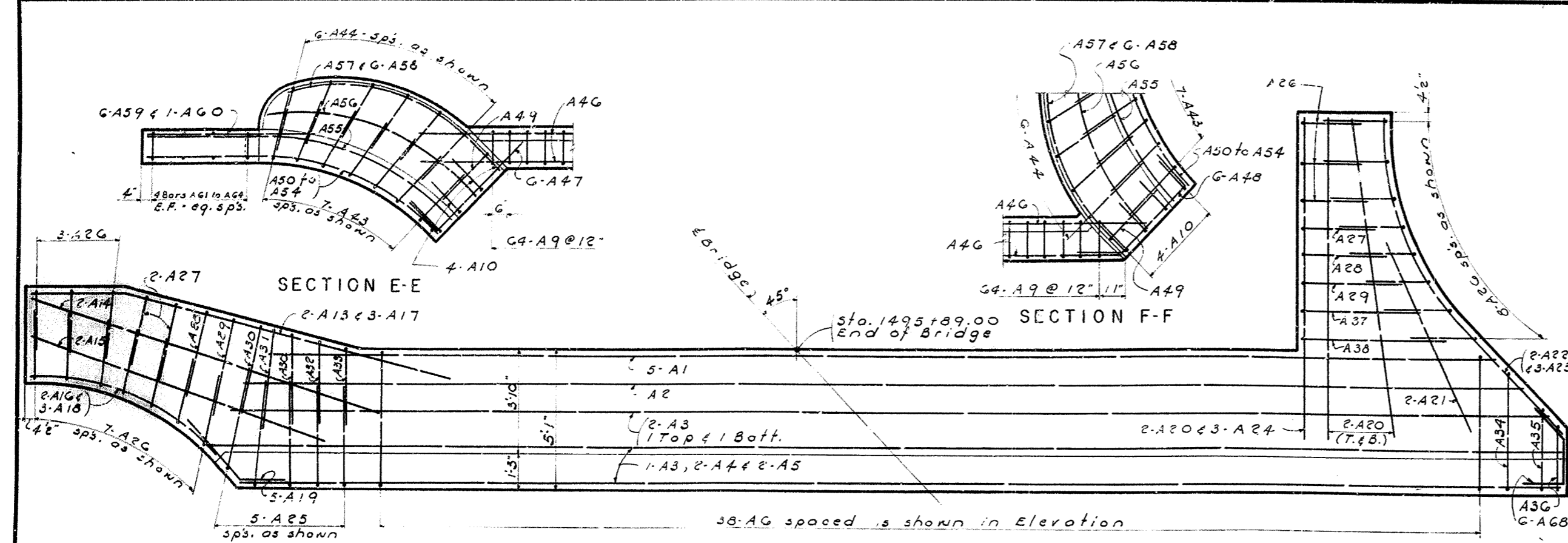
ABUTMENT No. 1

GUIST CREEK CROSSING (EASTBOUND RDWY.) Sheet 2

**COMMONWEALTH OF KENTUCKY**  
 DEPARTMENT OF HIGHWAYS  
 FRANKFORT  
 COUNTY OF  
 SHELBY  
 LOUISVILLE - LEXINGTON

ROAD  
 STATION 1497+18.5 R INTERSTATE PROJECT NO. 5-R-106-006-112  
 BRIDGE NUMBER  
 No. 13796

REVISIONS  
 DATE  
 BY  
 CHECKED BY  
 DATE  
 BY  
 CHECKED BY  
 DATE  
 BY  
 CHECKED BY  
 DATE



BILL OF REINFORCEMENT										DETAILS	
MARK	TYPE	NO.	SIZE	LENGTH FT. IN.	LOCATION	DIMENSIONS				DETAILS	
						a	b	c	d	TYPE 1	TYPE 2
A1	Str.	5	G	40	Abut. Cop.						
A2	Str.	1	C	48							
A3	Str.	3	C	50							
A4	Str.	2	C	50							
A5	Str.	2	C	51							
A6	Str.	1	C	10							
A7	Str.	4	C	28		3	6	4	8		
A8	Str.	4	C	28		4	5	0	3		
A9	Str.	2	C	5	Parapet	1	3	0	2		
A10	Str.	3	C	8	Wings-W.L.W.2	3	0	7	9		
A11	Str.	3	C	10	Key	4	3	3	8		
A12	Str.	4	C	5		0	3	8	8		
A13	Str.	2	C	10	Wingwall 1	5	10	12	9	3	0
A14	Str.	2	C	14							
A15	Str.	2	C	12							
A16	Str.	2	C	3		0	5	7	7	9	10
A17	Str.	3	C	5		3	10	12	0	2	10
A18	Str.	9	C	5		0	5	7	7	9	10
A19	Str.	3	C	5		2	1	3	10	2	8
A20	Str.	2	C	11	Wingwall 2						
A21	Str.	2	C	7							
A22	Str.	2	C	13		5	5	8	0	9	10
A23	Str.	3	C	13		5	5	8	0	9	10
A24	Str.	3	C	11							
A25	Str.	3	C	10	Wings-Ties	2	6	3	8		
A26	Str.	2	C	9		4	8	2	4		
A27	Str.	4	C	11		4	8	2	10		
A28	Str.	4	C	11		4	8	3	3		
A29	Str.	2	C	12		4	8	3	10		
A30	Str.	2	C	10		4	8	3	2		
A31	Str.	4	C	11		4	8	3	5		
A32	Str.	4	C	10		4	8	2	11		
A33	Str.	4	C	9		4	8	2	8		
A34	Str.	1	C	17		3	0	4	2		
A35	Str.	1	C	14		1	8	2	10		
A36	Str.	1	C	13		1	2	2	4		
A37	Str.	4	C	13		4	8	4	5		
A38	Str.	4	C	15		4	8	5	6		
A39	Str.	4	C	14	Abut. Cop.	3	11	0	3		
A40	Str.	4	C	14		3	8	0	3		
A41	Str.	4	C	14		2	7	0	3		
A42	Str.	4	C	14		2	4	0	3		
A43	Str.	3	C	14	Wings-W.L.W.2	2	4	8	3		
A44	Str.	7	C	10		2	4	8	0		
A45	Str.	4	C	5	Parapet	0	9	2	7		
A46	Str.	1	C	4							
A47	Str.	3	C	5	Wingwall 1	4	6	1	6		
A48	Str.	3	C	6	Wingwall 2	3	7				
A49	Str.	3	C	7	Wings-W.L.W.2	2	4	2	4		
A50	Str.	2	C	5		0	9	7	7	9	10
A51	Str.	2	C	5		2	2	7	7	9	10
A52	Str.	2	C	5		3	7	7	7	9	10
A53	Str.	2	C	5		4	4	7	7	9	10
A54	Str.	2	C	5		4	4	7	7	9	10
A55	Str.	2	C	5		4	4	7	7	9	10
A56	Str.	2	C	5		4	4	7	7	9	10
A57	Str.	2	C	5		0	5	8	13	9	0
A58	Str.	2	C	8		1	4	7	7	3	3
A59	Str.	1	C	5		1	4	7	7	3	3
A60	Str.	6	C	6		4	6	2	4	2	1
A61	Str.	4	C	5							
A62	Str.	4	C	5							
A63	Str.	4	C	5							
A64	Str.	4	C	5							
A65	Str.	3	C	5	Handrails	7	5	7	2	9	10
A66	Str.	10	C	7		5	0	4	11	10	2
A67	Str.	4	C	5							
A68	Str.	5	C	4	Abut. Cop.	2	2				
A69	Str.	1	C	43							

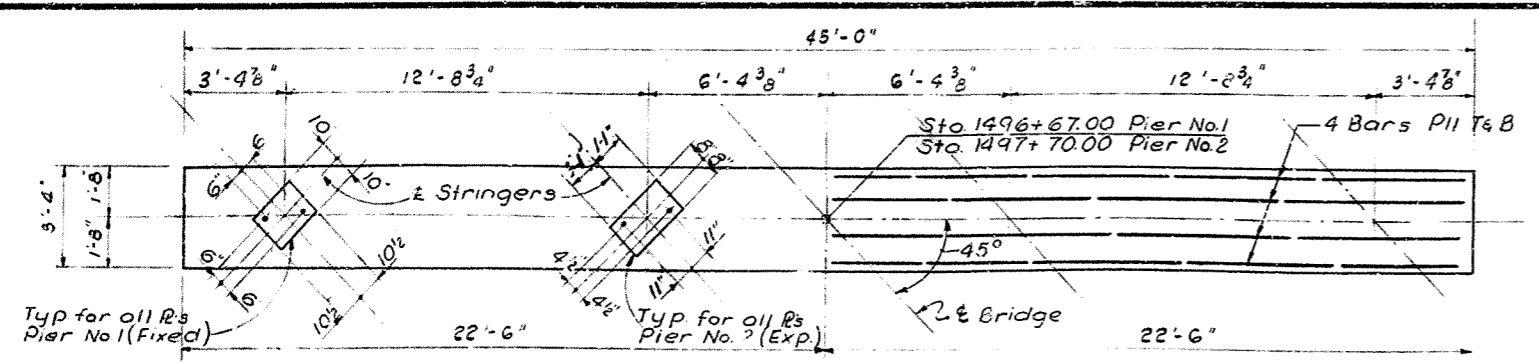
ESTIMATE OF QUANTITIES		
ITEM	UNIT	AMOUNT
Concrete Class 'A'	Cu.Yds.	876
Steel Reinforcement	Lbs.	5990

NOTE:  
For location of sections B-B, C-C, D-D, E-E and F-F see Sheet No. 2

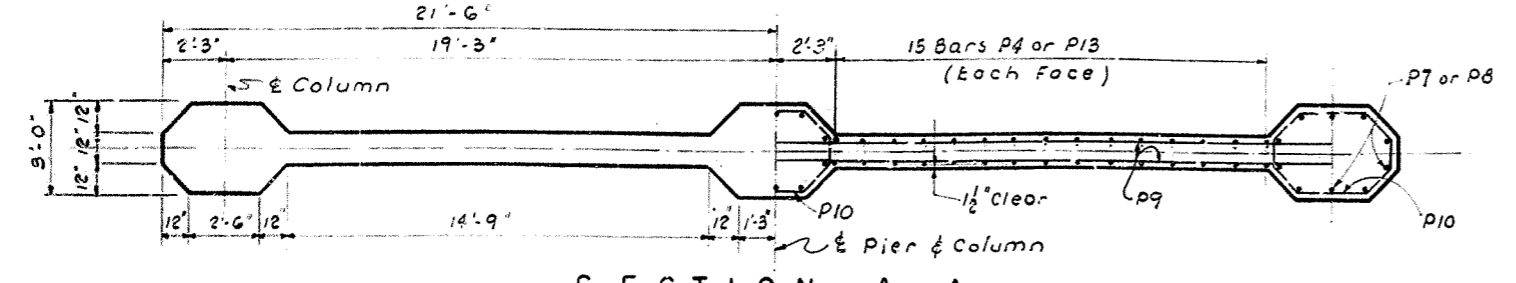
COMMONWEALTH OF KENTUCKY  
DEPARTMENT OF HIGHWAYS  
FRANKFORT  
COUNTY OF  
SHELBY  
LOUISVILLE-LEXINGTON  
ROAD  
STATION 1497.10.52 INTERSTATE PROJECT NO. S.F.106-006-02  
BRIDGE NUMBER  
13796

ABUTMENT No. 1

FED. ROAD DIST.	STATE	PER. APP. PROJ. NO.	FISCAL YEAR	PROJECT NO.	PROJECT
7	KY.	1-04-34			

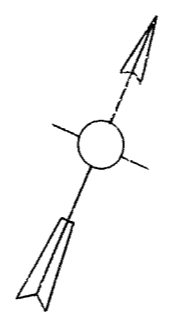


PLAN OF CAP

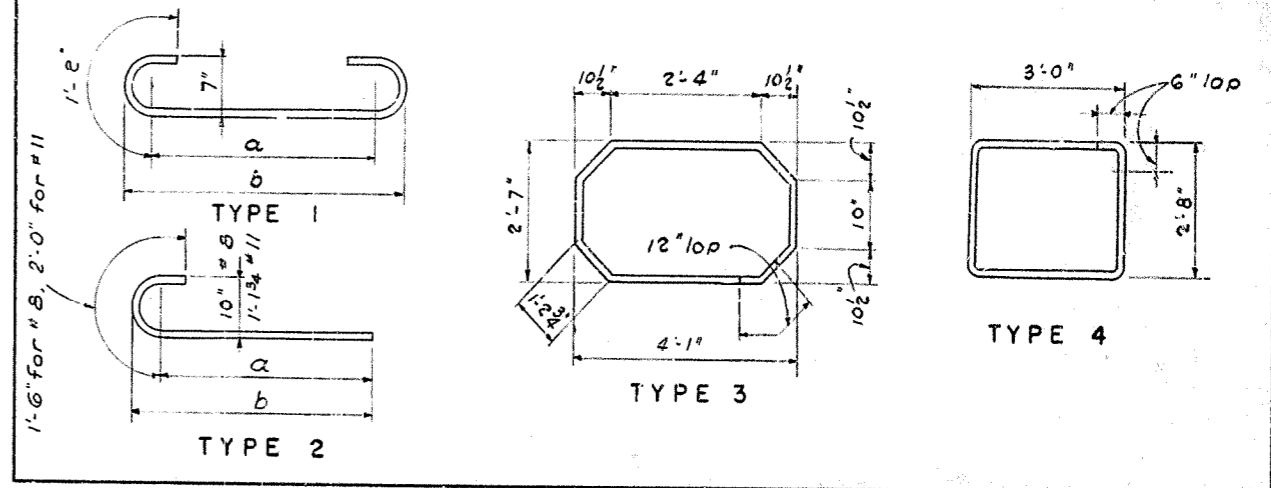


SECTION A - A

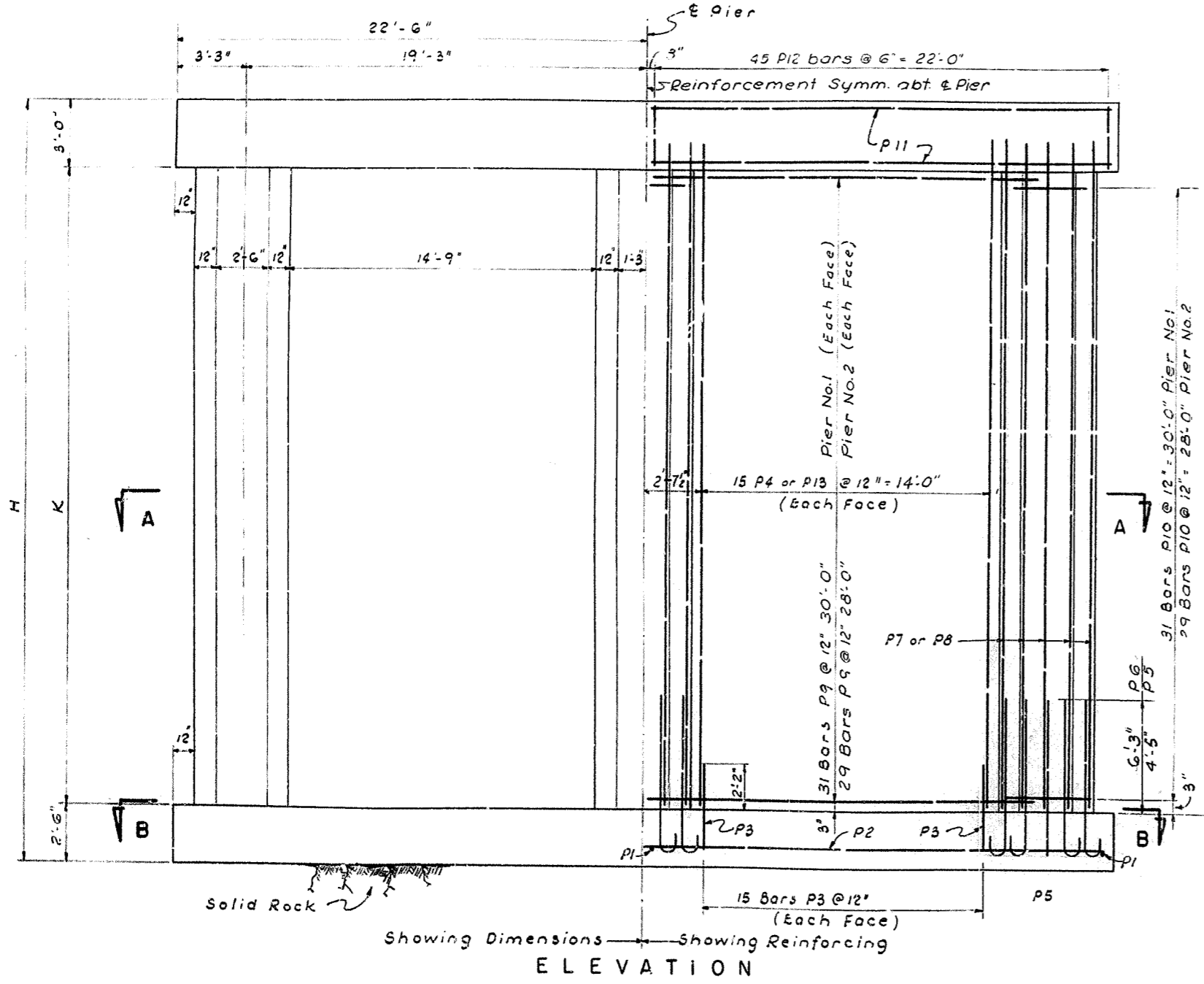
NOTE: Contractor shall exercise care in placing reinforcing bars in cap so as not to interfere with the drilling of holes for anchor dowels



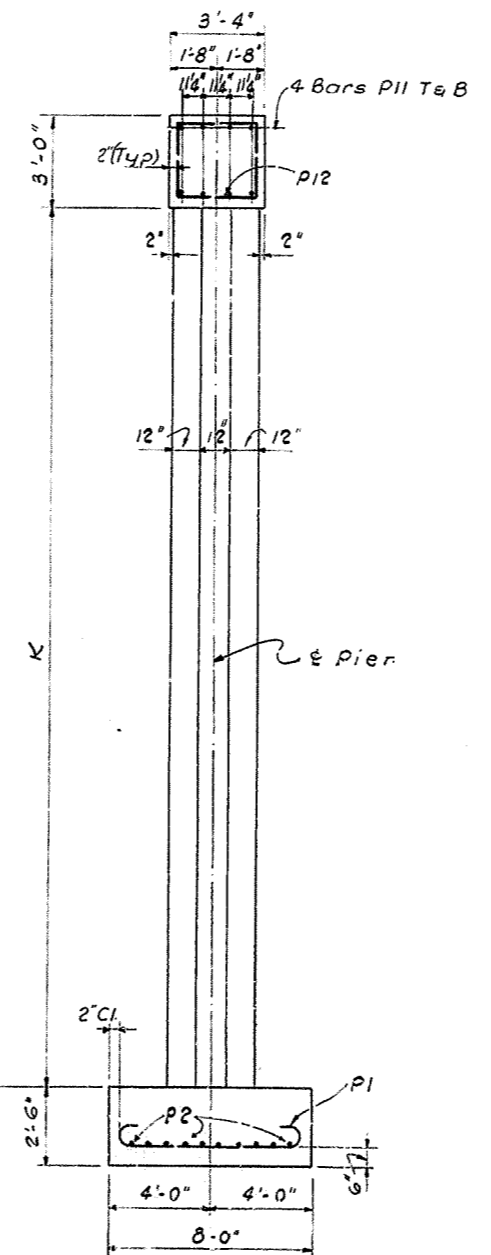
MARK	TYPE	NUMBER		SIZE	LENGTH	LOCATION	a		b	
		PIER No. 1 (Fixed)	PIER No. 2 (Exp.)				Ft.	In.	Ft.	In.
P1	1	45	45	7	9	Footing	7	1	7	5
P2	Str.	10	10	4	44	Footing				
P3	Str.	60	60	4	4	Web Wall Dowels				
P4	Str.	60		4	32	Web Wall				
P5	2		30	8	7	Column Dowels	6	0	6	5
P6	2	30		11	9	Column Dowels	7	8	8	28
P7	Str.		30	8	31	Column				
P8	Str.	30		11	32	Column				
P9	Str.	62	58	5	38	Web Wall				
P10	3	93	87	5	12	Column Hoops				
P11	Str.	8	8	8	44	Cap				
P12	4	90	90	5	12	Cap Hoops				
P13	Str.	60	60	4	31	Web Wall				



PIER	H	K	ELEVATION TOP OF CAP	ELEV. BOTTOM OF FOOTING	CONC. CLASS	REINFORCEMENT
					CU. YDS.	LBS
No. 1 (Fixed)	36'-0"	30'-6"	714.700	678.700	122.3	16,060
No. 2 (Exp.)	34'-6"	29'-0"	713.688	679.183	118.5	11,130

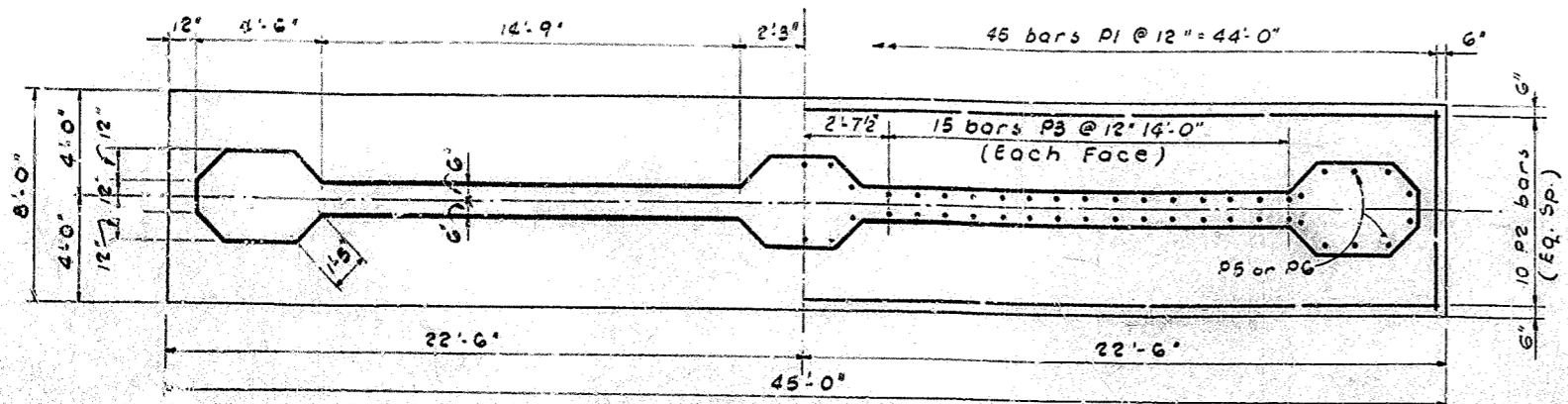


ELEVATION



END ELEVATION

Showing dimensions and reinforcement in cap and footing.



SECTIONAL PLAN B - B

DESIGNED BY	DATE	REVISION	DATE
D.H.	11/22		
CHECKED BY	DATE	REVISION	DATE
M.K.	11/22		
DETAILS BY	DATE	REVISION	DATE
M.K.	11/22		

GUIST CREEK CROSSING (EASTBOUND ROWY) Sheet 4

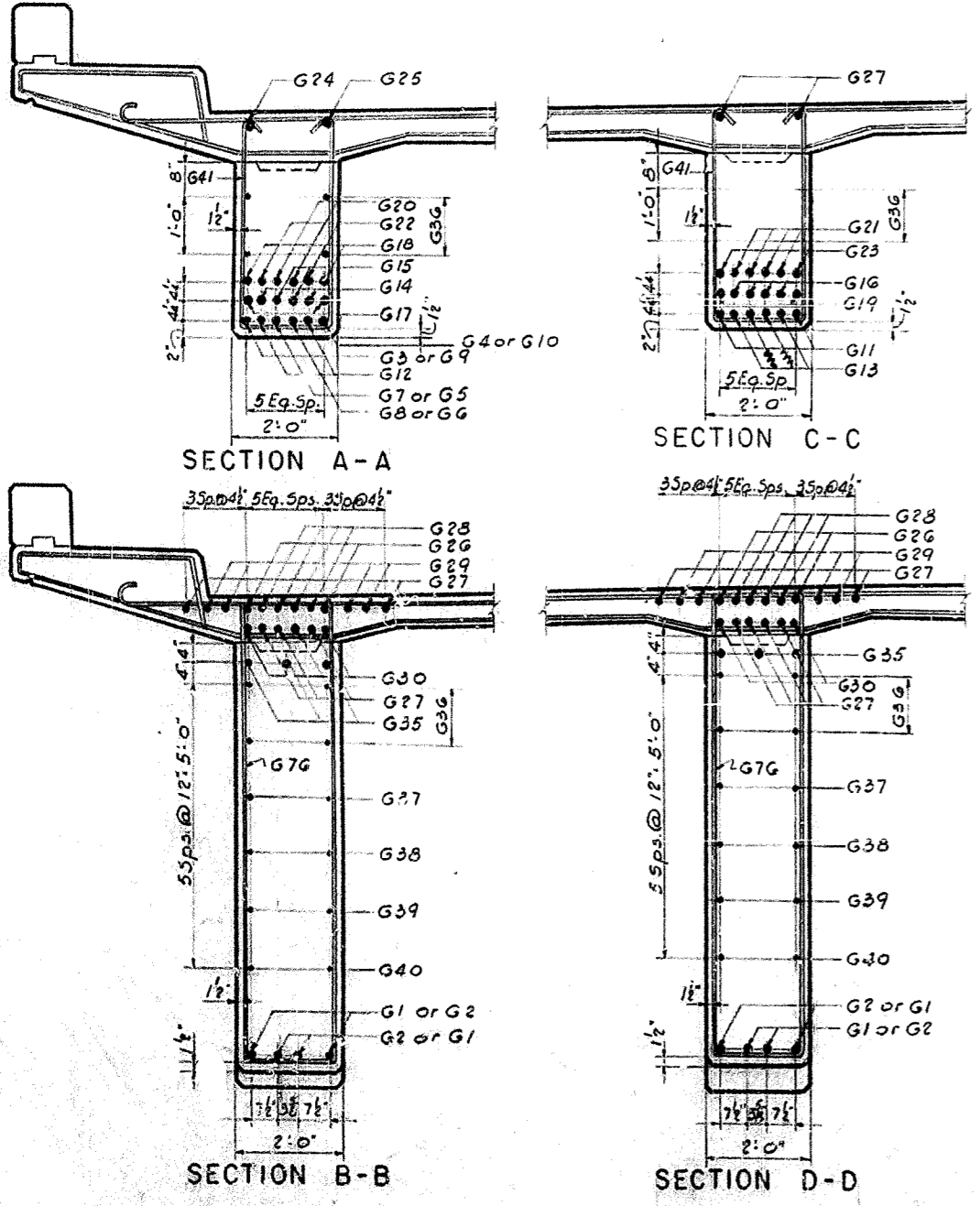
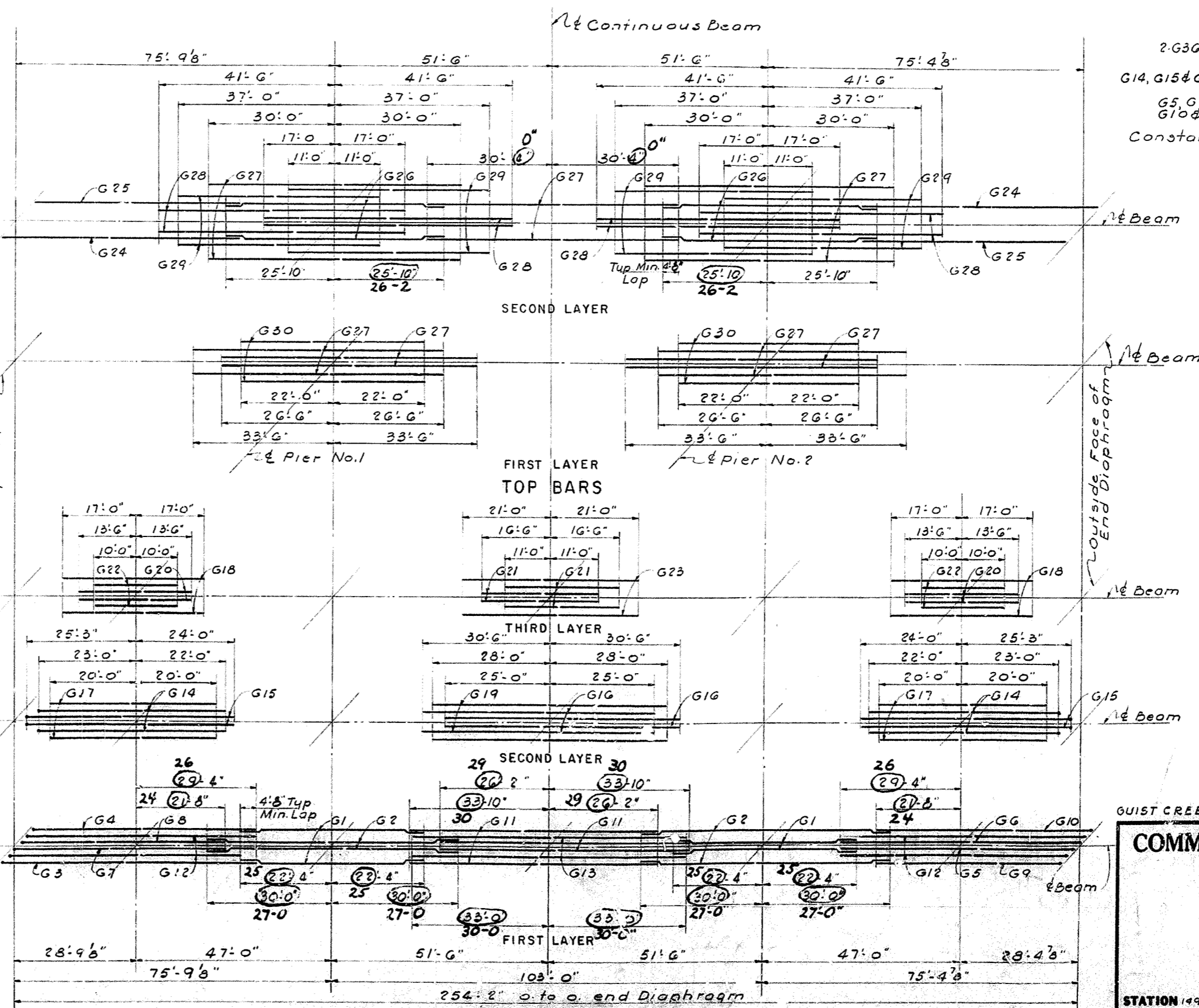
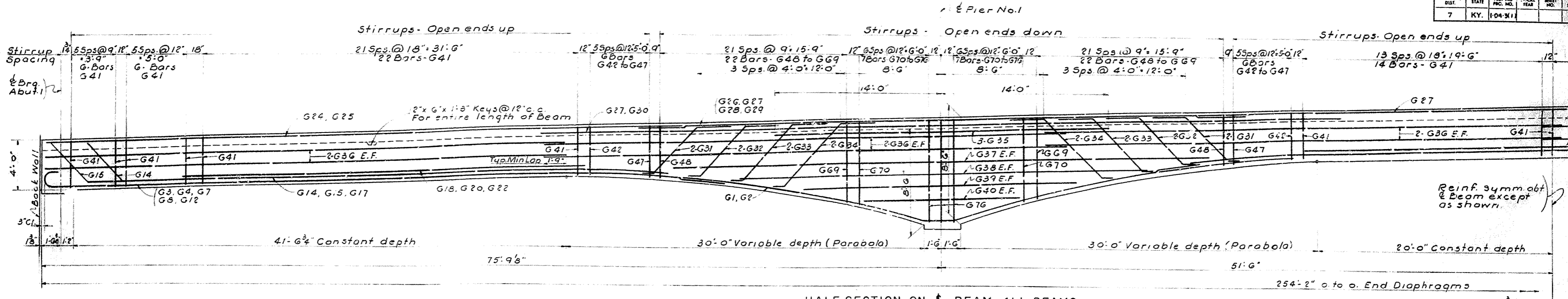
**COMMONWEALTH OF KENTUCKY**  
 DEPARTMENT OF HIGHWAYS  
 FRANKFORT  
 COUNTY OF  
 SHELBY  
 LOUISVILLE - LEXINGTON  
 ROAD  
 STATION 1497+0.00 INTERSTATE PROJECT NO. 3P-106-806-LE  
 BRIDGE NUMBER  
 DRAWING NO. 13796

PIER NOS. 1 & 2









GUIST CREEK CROSSING (EASTBOUND ROWY) Sheet 8

**COMMONWEALTH OF KENTUCKY**  
 DEPARTMENT OF HIGHWAYS  
 FRANKFORT  
 COUNTY OF  
 SHELBY  
 LOUISVILLE - LEXINGTON

ROAD

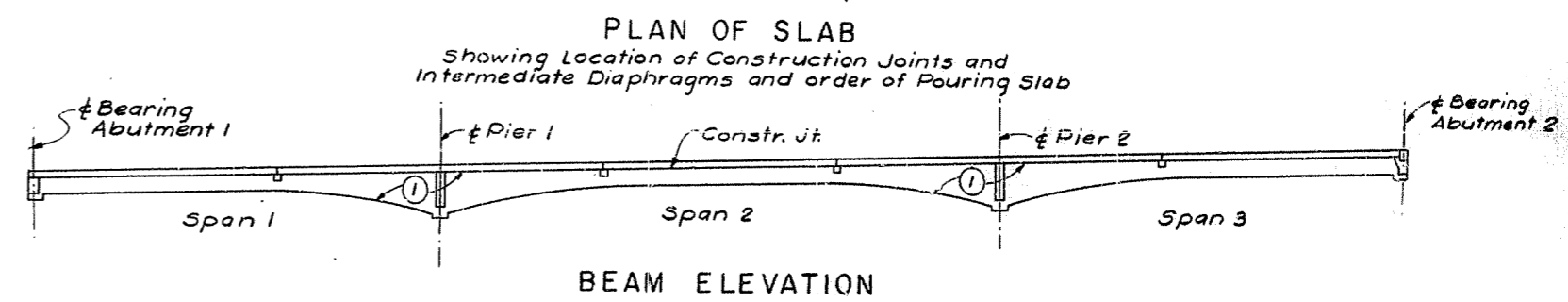
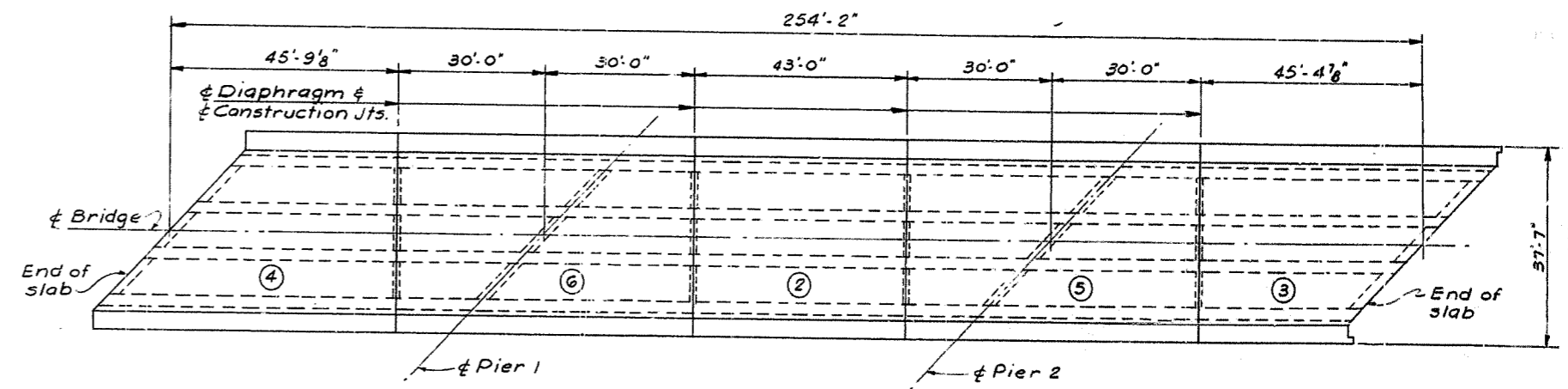
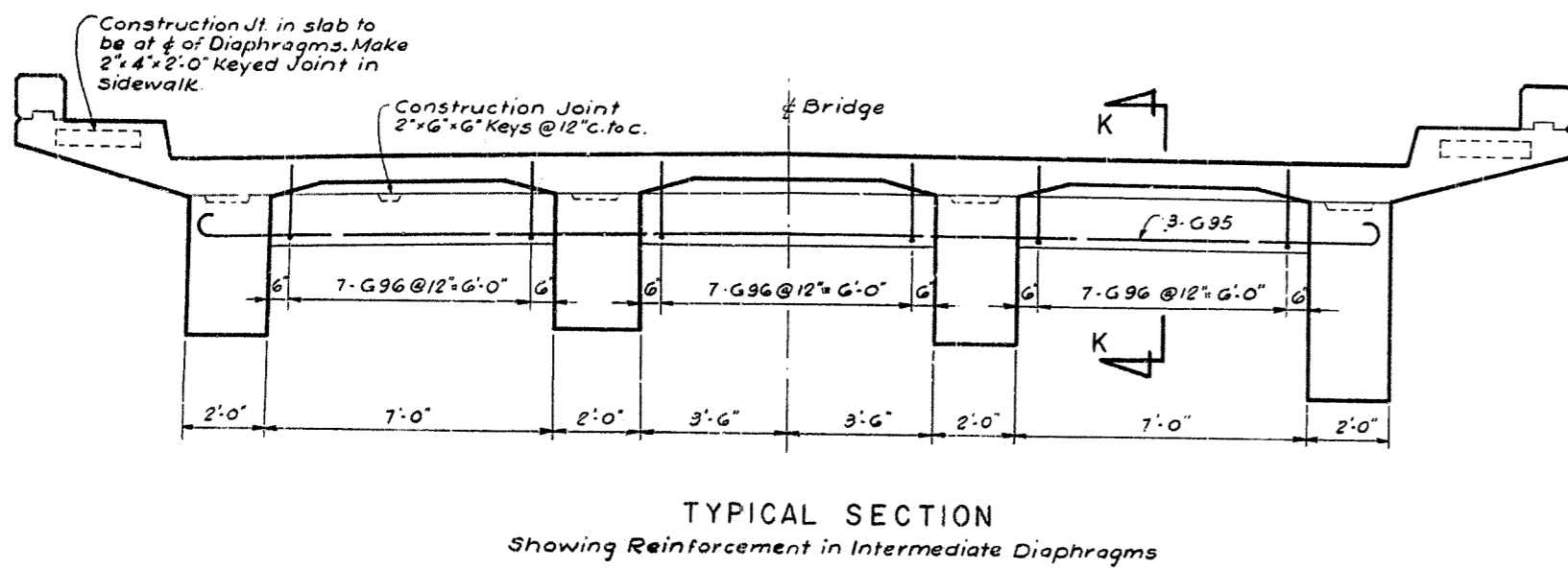
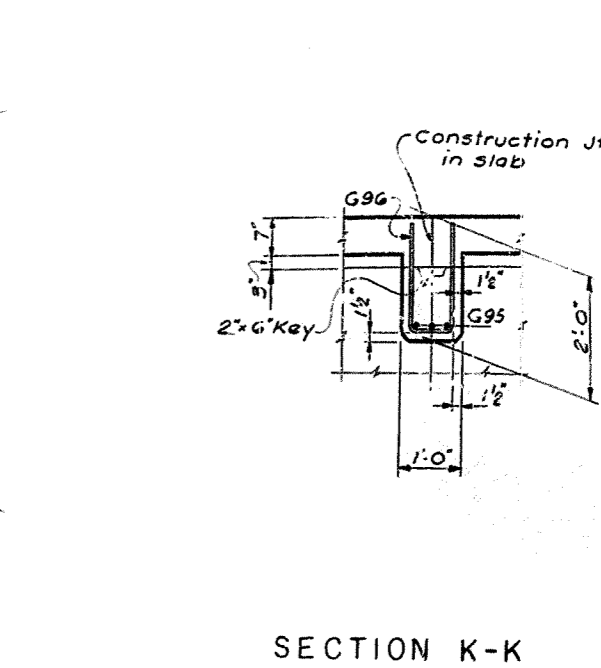
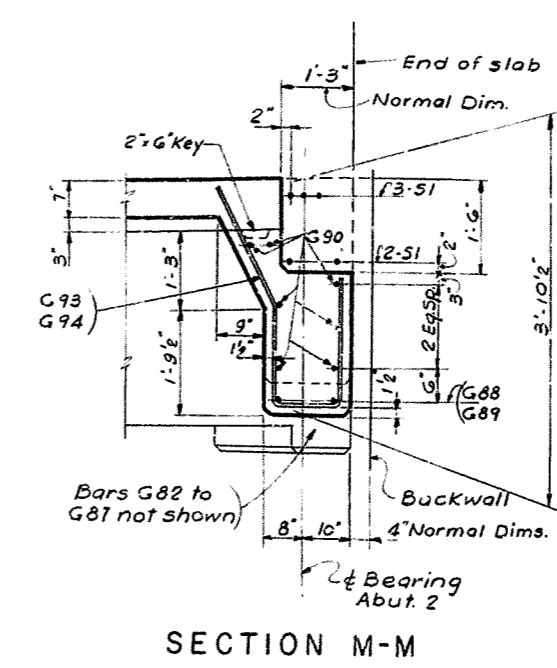
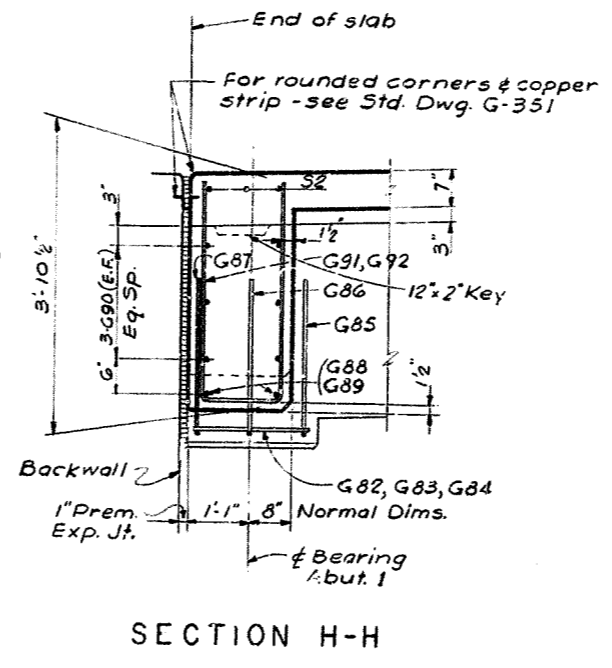
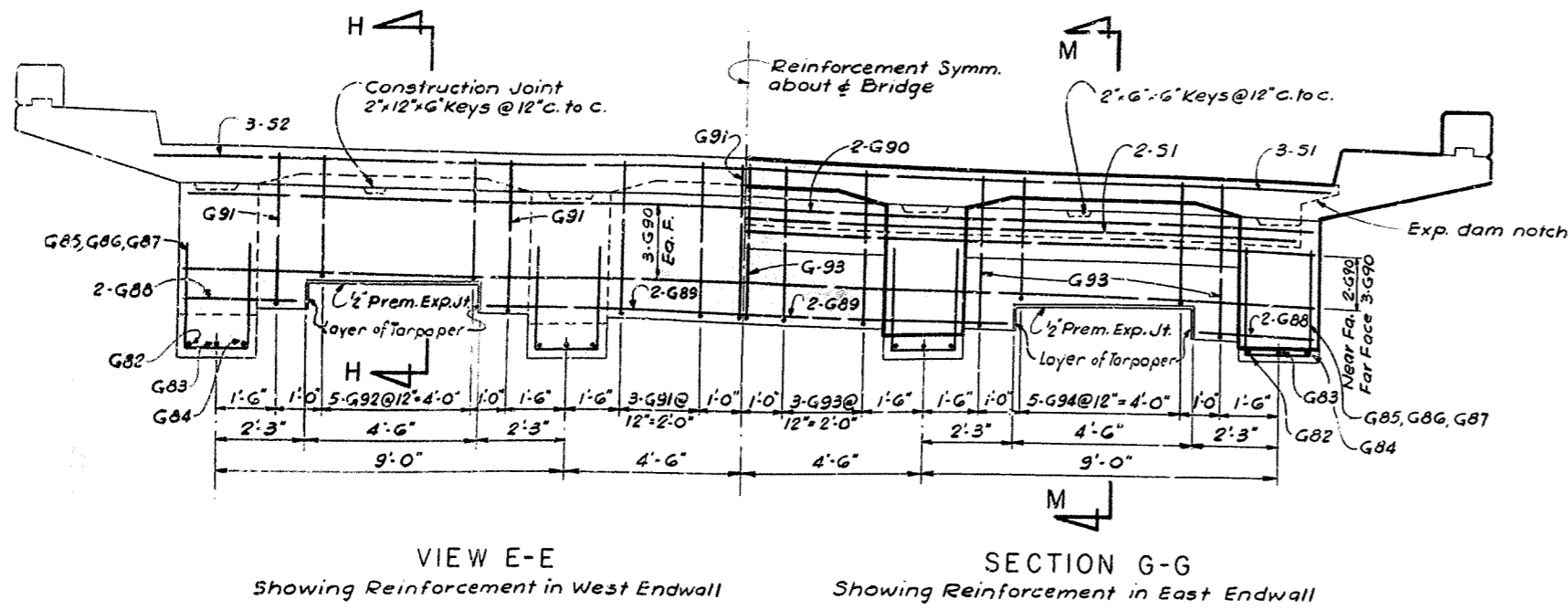
STATION 1497-10.5R INTERSTATE PROJECT NO. 31-106-22

BRIDGE NUMBER

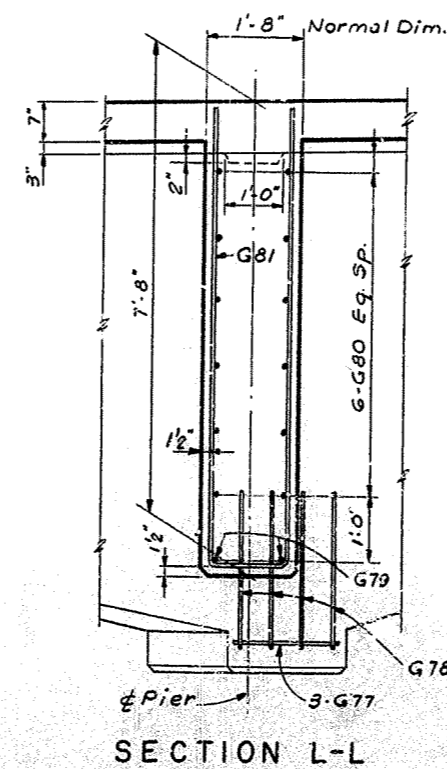
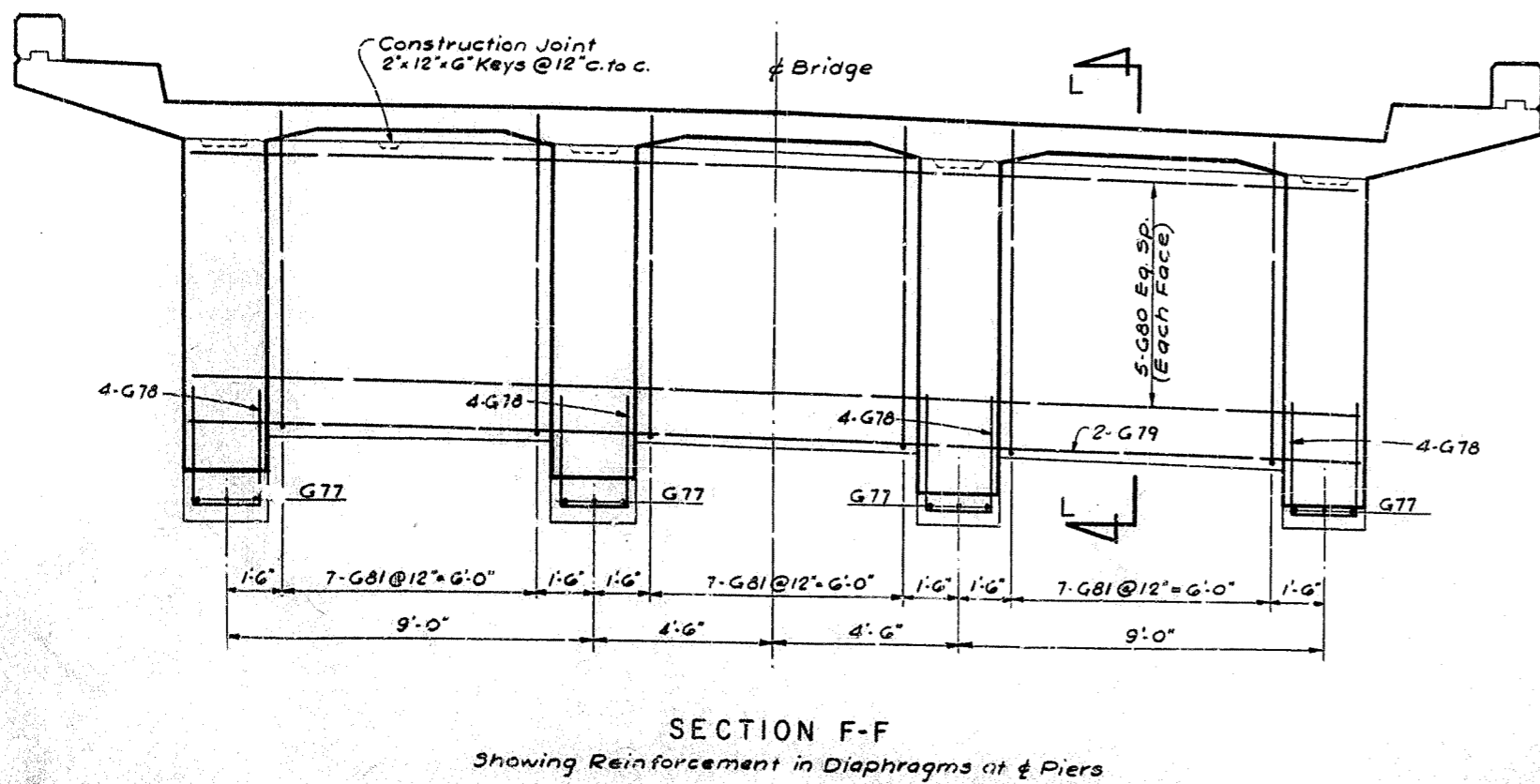
NO. 13796

DRAWN BY: J.A.R. CHECKED BY: M.E. DATE: 11/12  
 DESIGNED BY: J.A.R. CHECKED BY: M.E. DATE: 11/12  
 REVISIONS: REVISIONS: REVISIONS: REVISIONS: REVISIONS: REVISIONS:





**Notes:**  
 Pour each beam in one continuous pour in horizontal layers.  
 Pour endwalls and diaphragms with beams by providing vertical keyed construction joints at  $\frac{1}{2}$  between beams.



SPANS 1, 2 & 3

GUIST CREEK CROSSING (EASTBOUND RD.WY.) Sheet 9

**COMMONWEALTH OF KENTUCKY**  
 DEPARTMENT OF HIGHWAYS  
 FRANKFORT  
 COUNTY OF

ROAD

STATION 1497-10.52 INTERSTATE PROJECT #9, SP. 107, 000' L.R.

BRIDGE NUMBER

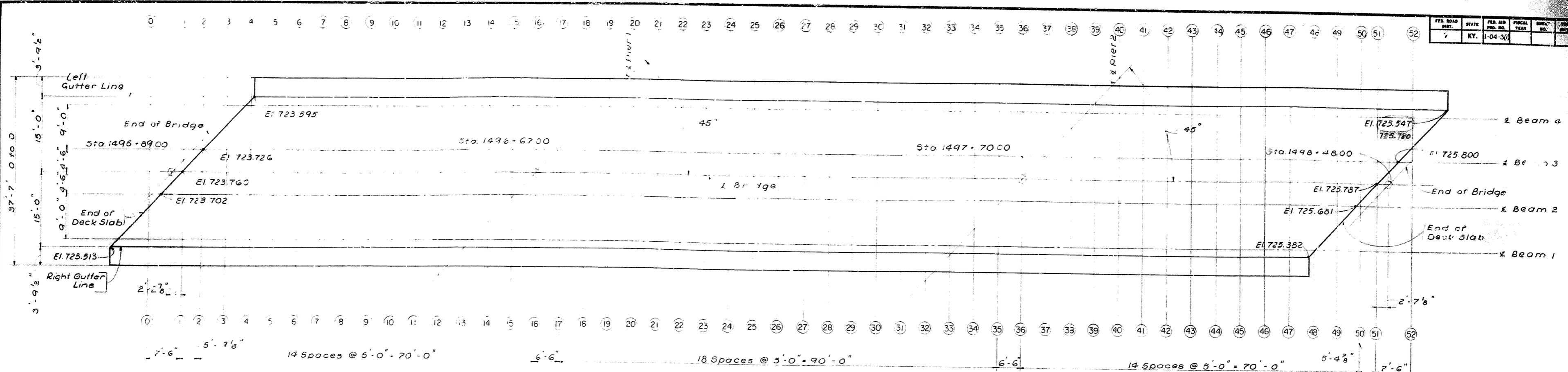
DRAWING NO. 13796

DATE: 11/77  
 CHECKED BY: M.K.  
 DESIGNED BY: M.K.  
 DATE: 11/77  
 CHECKED BY: M.K.  
 DESIGNED BY: M.K.

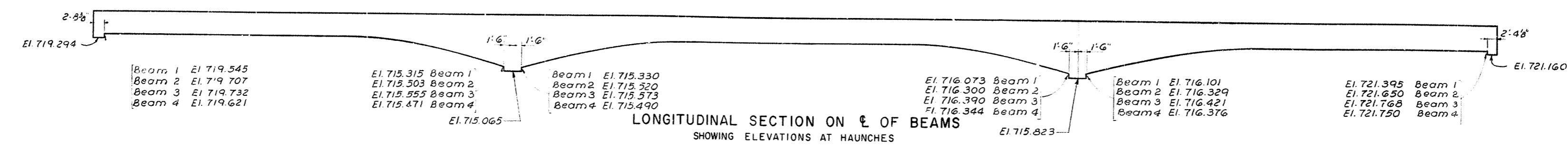




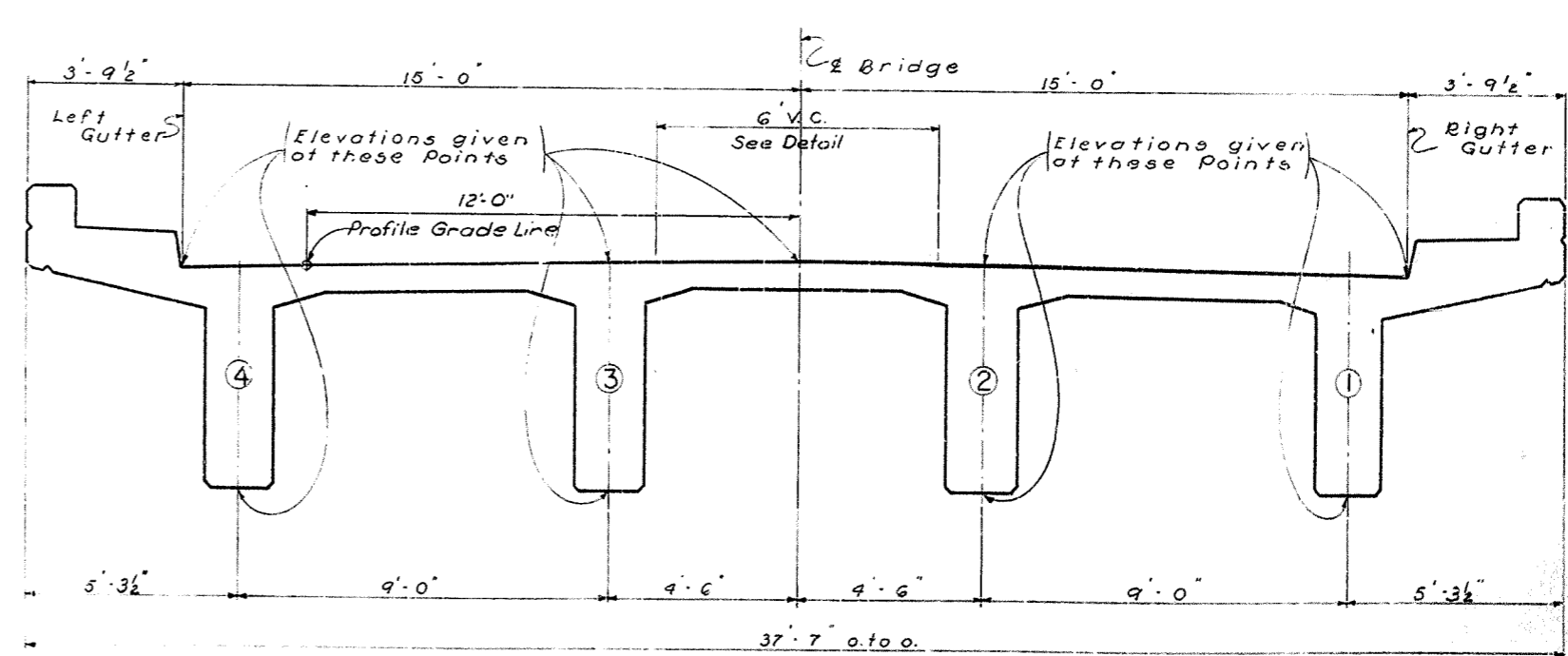
FED. ROAD DIST.	STATE	FED. AID PROJ. NO.	FISCAL YEAR	SHEET NO.	TOTAL SHEETS
7	KY.	1-04-30			



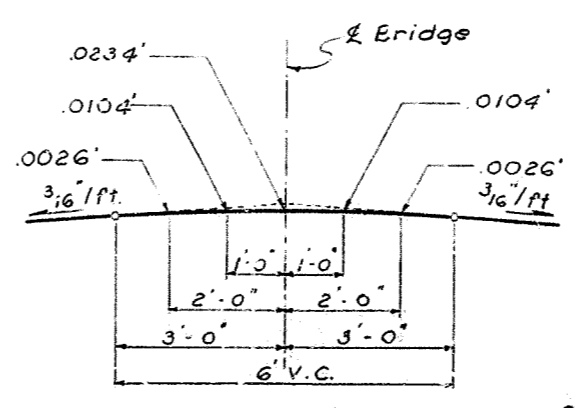
PLAN  
SHOWING SECTIONS AND ELEVATIONS TOP OF SLAB ENDS



LONGITUDINAL SECTION ON E OF BEAMS  
SHOWING ELEVATIONS AT HAUNCHES



CROSS SECTION  
SHOWING POINTS AT WHICH ELEVATIONS ARE GIVEN



PARABOLIC CROWN  
CONSTRUCTION ELEVATIONS

REVISIONS: ELEV. BEAM FROM #2  
DATE 7/12  
BY [Signature]  
CHECKED BY [Signature]  
DATE 7/12

LOCATION	E BEAM 4				E BEAM 3				E BEAM 2				E BEAM 1			
	TOP OF SLAB AT GUTTER OVER BEAM	BOTTOM OF SLAB	TOP OF SLAB AT BRIDGE	BOTTOM OF BEAM	TOP OF SLAB AT BRIDGE	BOTTOM OF SLAB	TOP OF SLAB AT BRIDGE	BOTTOM OF BEAM	TOP OF SLAB AT BRIDGE	BOTTOM OF BEAM	TOP OF SLAB AT BRIDGE	BOTTOM OF BEAM	TOP OF SLAB AT BRIDGE	BOTTOM OF BEAM	TOP OF SLAB AT BRIDGE	BOTTOM OF BEAM
1	723.597	719.621	723.781	719.781	723.753	719.781	723.810	719.810	723.810	719.810	723.810	719.810	723.810	719.810	723.810	719.810
2	723.627	719.651	723.811	719.811	723.783	719.811	723.840	719.840	723.840	719.840	723.840	719.840	723.840	719.840	723.840	719.840
3	723.661	719.681	723.841	719.841	723.813	719.841	723.870	719.870	723.870	719.870	723.870	719.870	723.870	719.870	723.870	719.870
4	723.695	719.711	723.871	719.871	723.843	719.871	723.900	719.900	723.900	719.900	723.900	719.900	723.900	719.900	723.900	719.900
5	723.729	719.741	723.901	719.901	723.873	719.901	723.930	719.930	723.930	719.930	723.930	719.930	723.930	719.930	723.930	719.930
6	723.763	719.771	723.931	719.931	723.903	719.931	723.960	719.960	723.960	719.960	723.960	719.960	723.960	719.960	723.960	719.960
7	723.797	719.801	723.961	719.961	723.933	719.961	724.000	720.000	724.000	720.000	724.000	720.000	724.000	720.000	724.000	720.000
8	723.831	719.831	723.991	719.991	723.963	719.991	724.050	720.050	724.050	720.050	724.050	720.050	724.050	720.050	724.050	720.050
9	723.865	719.861	724.021	720.021	724.003	720.021	724.060	720.060	724.060	720.060	724.060	720.060	724.060	720.060	724.060	720.060
10	723.899	719.891	724.051	720.051	724.033	720.051	724.090	720.090	724.090	720.090	724.090	720.090	724.090	720.090	724.090	720.090
11	723.933	719.921	724.081	720.081	724.063	720.081	724.120	720.120	724.120	720.120	724.120	720.120	724.120	720.120	724.120	720.120
12	723.967	719.951	724.111	720.111	724.093	720.111	724.150	720.150	724.150	720.150	724.150	720.150	724.150	720.150	724.150	720.150
13	724.001	719.981	724.141	720.141	724.123	720.141	724.160	720.160	724.160	720.160	724.160	720.160	724.160	720.160	724.160	720.160
14	724.035	720.011	724.171	720.171	724.153	720.171	724.190	720.190	724.190	720.190	724.190	720.190	724.190	720.190	724.190	720.190
15	724.069	720.041	724.201	720.201	724.183	720.201	724.220	720.220	724.220	720.220	724.220	720.220	724.220	720.220	724.220	720.220
16	724.103	720.071	724.231	720.231	724.213	720.231	724.240	720.240	724.240	720.240	724.240	720.240	724.240	720.240	724.240	720.240
17	724.137	720.101	724.261	720.261	724.243	720.261	724.270	720.270	724.270	720.270	724.270	720.270	724.270	720.270	724.270	720.270
18	724.171	720.131	724.291	720.291	724.273	720.291	724.300	720.300	724.300	720.300	724.300	720.300	724.300	720.300	724.300	720.300
19	724.205	720.161	724.321	720.321	724.303	720.321	724.330	720.330	724.330	720.330	724.330	720.330	724.330	720.330	724.330	720.330
20	724.239	720.191	724.351	720.351	724.333	720.351	724.350	720.350	724.350	720.350	724.350	720.350	724.350	720.350	724.350	720.350
21	724.273	720.221	724.381	720.381	724.363	720.381	724.370	720.370	724.370	720.370	724.370	720.370	724.370	720.370	724.370	720.370
22	724.307	720.251	724.411	720.411	724.393	720.411	724.400	720.400	724.400	720.400	724.400	720.400	724.400	720.400	724.400	720.400
23	724.341	720.281	724.441	720.441	724.423	720.441	724.430	720.430	724.430	720.430	724.430	720.430	724.430	720.430	724.430	720.430
24	724.375	720.311	724.471	720.471	724.453	720.471	724.460	720.460	724.460	720.460	724.460	720.460	724.460	720.460	724.460	720.460
25	724.409	720.341	724.501	720.501	724.483	720.501	724.490	720.490	724.490	720.490	724.490	720.490	724.490	720.490	724.490	720.490
26	724.443	720.371	724.531	720.531	724.513	720.531	724.520	720.520	724.520	720.520	724.520	720.520	724.520	720.520	724.520	720.520
27	724.477	720.401	724.561	720.561	724.543	720.561	724.550	720.550	724.550	720.550	724.550	720.550	724.550	720.550	724.550	720.550
28	724.511	720.431	724.591	720.591	724.573	720.591	724.580	720.580	724.580	720.580	724.580	720.580	724.580	720.580	724.580	720.580
29	724.545	720.461	724.621	720.621	724.603	720.621	724.610	720.610	724.610	720.610	724.610	720.610	724.610	720.610	724.610	720.610
30	724.579	720.491	724.651	720.651	724.633	720.651	724.640	720.640	724.640	720.640	724.640	720.640	724.640	720.640	724.640	720.640
31	724.613	720.521	724.681	720.681	724.663	720.681	724.670	720.670	724.670	720.670	724.670	720.670	724.670	720.670	724.670	720.670
32	724.647	720.551	724.711	720.711	724.693	720.711	724.700	720.700	724.700	720.700	724.700	720.700	724.700	720.700	724.700	720.700
33	724.681	720.581	724.741	720.741	724.723	720.741	724.730	720.730	724.730	720.730	724.730	720.730	724.730	720.730	724.730	720.730
34	724.715	720.611	724.771	720.771	724.753	720.771	724.760	720.760	724.760	720.760	724.760	720.760	724.760	720.760	724.760	720.760
35	724.749	720.641	724.801	720.801	724.783	720.801	724.790	720.790	724.790	720.790	724.790	720.790	724.790	720.790	724.790	720.790
36	724.783	720.671	724.831	720.831	724.813	720.831	724.820	720.820	724.820	720.820	724.820	720.820	724.820	720.820	724.820	720.820
37	724.817	720.701	724.861	720.861	724.843	720.861	724.850	720.850	724.850	720.850	724.850	720.850	724.850	720.850	724.850	720.850
38	724.851	720.731	724.891	720.891	724.873	720.891	724.880	720.880	724.880	720.880	724.880	720.880	724.880	720.880	724.880	720.880
39	724.885	720.761	724.921	720.921	724.903	720.921	724.910	720.910	724.910	720.910	724.910	720.910	724.910	720.910	724.910	720.910
40	724.919	720.791	724.951	720.951	724.933	720.951	724.940	720.940	724.940	720.940	724.940	720.940	724.940	720.940	724.940	720.940
41	724.953	720.821	724.981	720.981	724.963	720.981	724.970	720.970	724.970	720.970	724.970	720.970	724.970	720.970	724.970	720.970
42	724.987	720.851	725.011	721.011	724.983	721.011	725.000	721.000	725.000	721.000	725.000	721.000	725.000	721.000	725.000	721.000
43	725.021	720.881	725.041	721.041	725.023	721.041	725.030	721.030	725.030	721.030	725.030	721.030	725.030	721.030	725.030	721.030
44	725.055	720.911	725.071	721.071	725.053	721.071	725.060	721.060	725.060	721.060	725.060	721.060	725.060	721.060	725.060	721.060
45	725.089	720.941	725.101	721.101	725.083	721.101	725.090	721.090	725.090	721.090	725.090	721.090	725.090	721.090	725.090	721.090
46	725.123	720.971	725.131	721.131	725.123	721.131	725.130	721.130	725.130	721.130	725.130	721.130	725.130	721.130	725.130	721.130
47	725.157	721.001	725.151	721.151	725.153	721.151	725.160	721.150	725.160	721.150	725.160	721.150	725.160	721.150	725.160	721.150
48	725.191	721.031	725.171	721.171	725.183	721.171	725.180	721.170	725.180	721.170	725.180	721.170	725.180	721.170	725.180	721.170
49	725.225	721.061	725.191	721.191	725.203	721.191	725.200	721.180	725.200	721.180	725.200	721.180	725.200	721.180	725.200	721.180
50	725.259	721.091	725.211	721.211	725.233	721.211	725.230	721.200	725.230	721.200	725.230	721.200	725.230	721.200	725.230	721.200
51	725.293	721.121	725.231	721.231	725.253	721.231	725.250	721.220	725.250	721.220	725.250	721.220	725.250	721.220	725.250	721.220
52	725.327	721.151	725.251	721.251	725.273	721.251	725.270	721.240	725.270	721.240	725.270	721.240	725.270	721.240	725.270	721.240

\* THESE ELEVATION CONTAIN CONSTRUCTION CAMBER AND MUST BE MAINTAINED WITH FALSEWORK IN PLACE

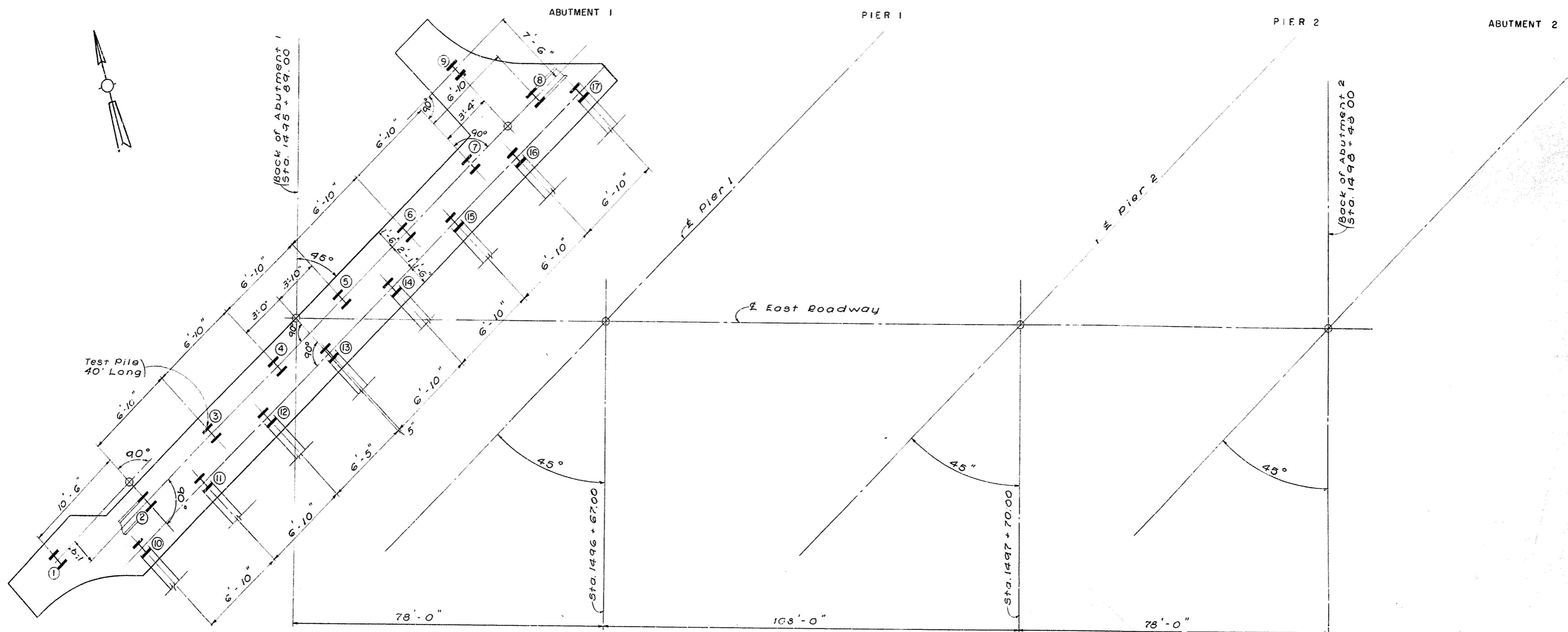
GUIST CREEK CROSSING (EASTBOUND RDWY.) Sheet 12

**COMMONWEALTH OF KENTUCKY**  
DEPARTMENT OF HIGHWAYS  
FRANKFORT  
COUNTY OF  
SHELBY  
LOUISVILLE - LEXINGTON

ROAD  
STATION 1497+18.58 INTERSTATE PROJECT NO. 3-P-106-006-L2

BRIDGE NUMBER

DRAWING NO. 13796



PLAN

PILE RECORDS				
12" STEEL PILES AT 53 #				
ABUTMENT 1				
PILE NO.	CUT-OFF ELEVATION AS SHOWN ON PLANS	TIP OF PILE ELEVATION AS DRIVEN	PILE LENGTH IN PLACE LIN. FT.	CALCULATED BEARING CAPACITY TONS
1	716.117			
2	716.117			
3	716.117			
4	716.117			
5	716.117			
6	716.117			
7	716.117			
8	716.117			
9	716.117			
10	716.117			
11	716.117			
12	716.117			
13	716.117			
14	716.117			
15	716.117			
16	716.117			
17	716.117			

NOTE:  
 This pile record does not replace other records of piles required to be kept and submitted by the Resident Engineer. After all piles have been driven the Resident Engineer shall record the tip of pile elevation as driven, length of pile in place, and calculate the bearing capacity of each pile, and return one blue print copy of this sheet with this data to the Bridge Engineer to be recorded on original plans.  
 Length of piles in place shown hereon are the actual length of piles in the finished structure below Cut-off Elevation and is not necessarily the Pay Item.

QUIST CREEK CROSSING (EASTBOUND RDWY) Sheet 13

**COMMONWEALTH OF KENTUCKY**  
 DEPARTMENT OF HIGHWAYS  
 FRANKFORT  
 COUNTY OF  
 SHELBY  
 LOUISVILLE - LEXINGTON

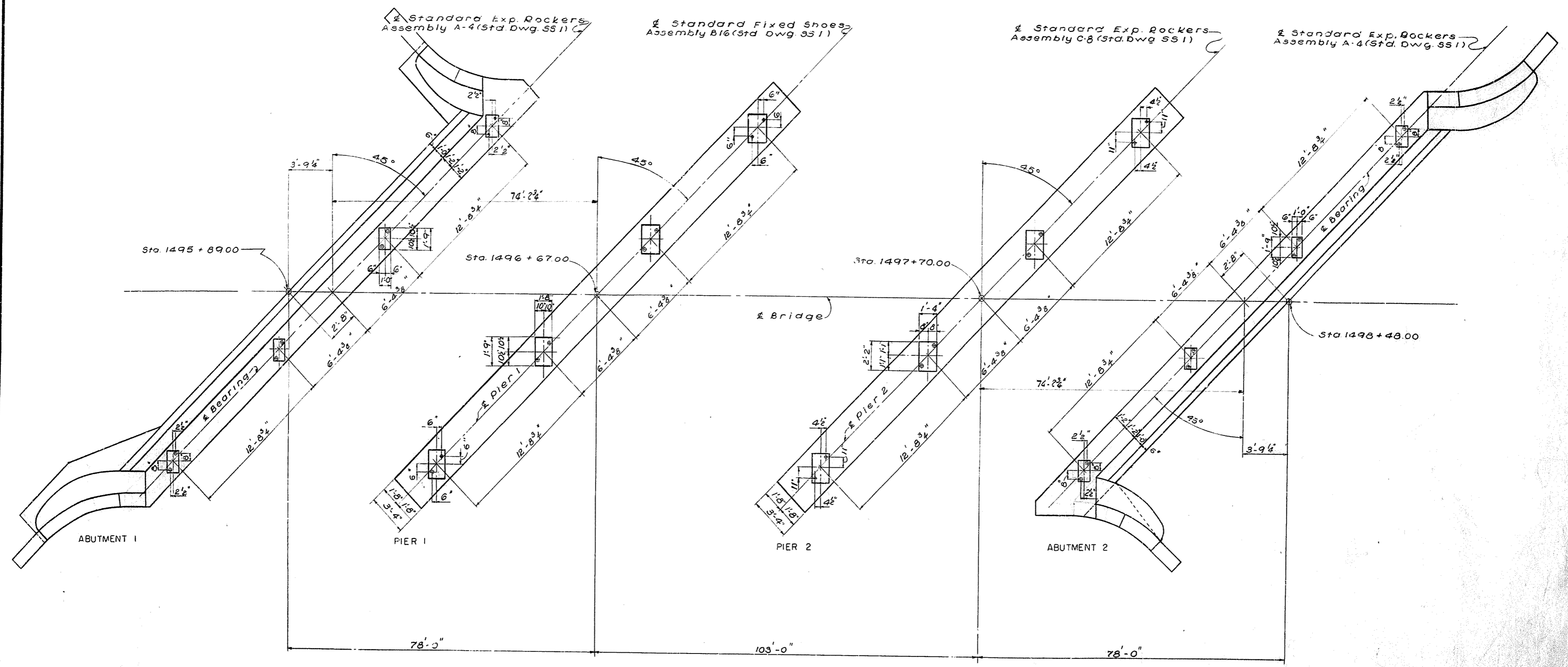
ROAD

STATION 497 + 0.52 INTERSTATE PROJECT NO. 88106 26-42  
 BRIDGE NUMBER 13796

PILE RECORD

DESIGNED BY: \_\_\_\_\_ DATE: \_\_\_\_\_  
 CHECKED BY: \_\_\_\_\_ DATE: \_\_\_\_\_  
 DRAWN BY: \_\_\_\_\_ DATE: \_\_\_\_\_  
 REVISIONS: \_\_\_\_\_ DATE: \_\_\_\_\_

FED. ROAD DIST.	STATE	PER. AIR. PROJ. NO.	PLAN. YEAR	SHEET NO.	TOTAL SHEETS
7	KY.	0-130			



DESIGNED BY	DATE	REVISION	DATE
CHECKED BY	DATE	REVISION	DATE
APPROVED BY	DATE	REVISION	DATE
DESIGNED BY	DATE	REVISION	DATE
CHECKED BY	DATE	REVISION	DATE
APPROVED BY	DATE	REVISION	DATE

ANCHOR BOLT PLAN

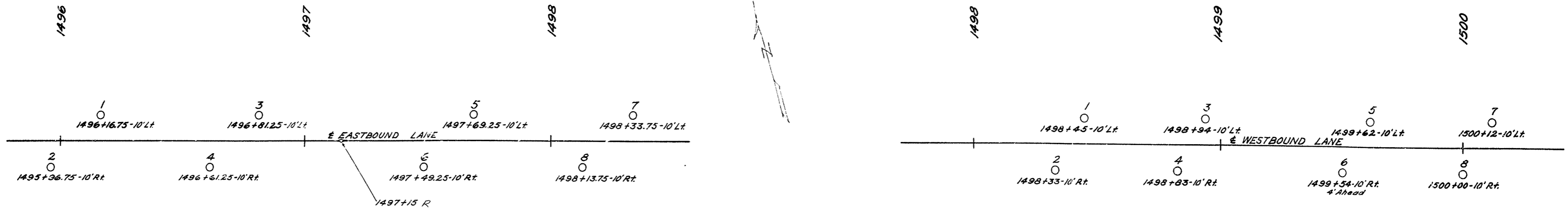
GUIST CREEK CROSSING (EASTBOUND RDWY) Sheet 14

**COMMONWEALTH OF KENTUCKY**  
 DEPARTMENT OF HIGHWAYS  
 FRANKFORT  
 COUNTY OF  
 SHELBY  
 LOUISVILLE LEXINGTON

ROAD  
 STATION 1497+10.58 INTERSTATE PROJECT NO. S.P. 105-105-144

BRIDGE NUMBER  
 DRAWING NO. 13796

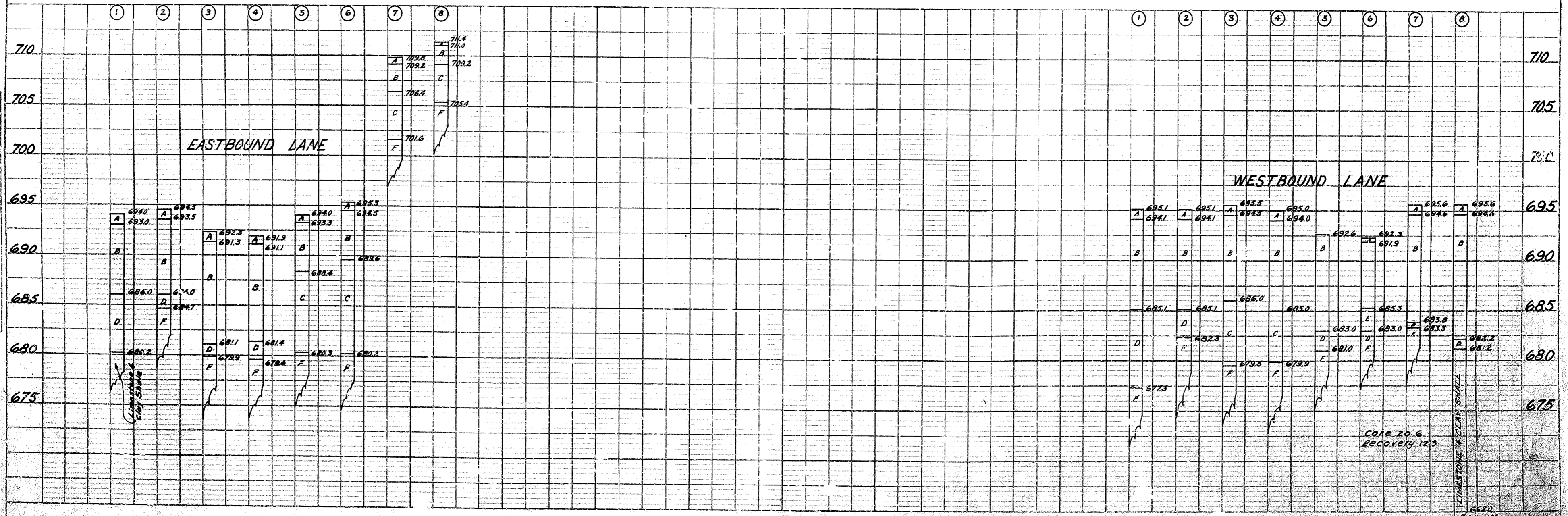
# SOUNDING LAYOUT



**SHELBY COUNTY**  
 U.S. 60 INTERSTATE S.R. 106-806-L 2  
 GUST CREEK BRIDGE  
 SCALE: 1"=20'

### LEGEND

- A = Top Soil
- B = Yellow Sandy Clay
- C = Yellow Clay
- D = Blue Clay
- F = Limestone



DATE	
BY	
PROJECT	
NO.	
DATE	
BY	
PROJECT	
NO.	

DATE	
BY	
PROJECT	
NO.	
DATE	
BY	
PROJECT	
NO.	